

# USER MANUAL



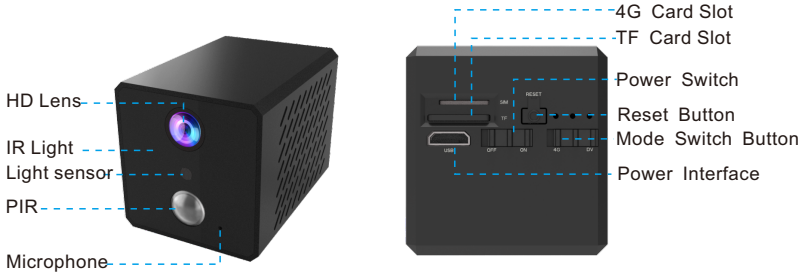
*My safety, My rule!*

## Video Tutorial

If it is your first time to use our products, it is recommended to scan the following QR code to watch the video tutorial.



## Product Description



**How to reset camera:** Turn the power switch to “On”, hold on the reset button for 5 seconds until you see the blue light and the green light turn on together , and then the blue light flashes slowly.

## Device Description

- This device has two modes: IP Camera (4G) mode and Recorder (DV) mode.
- Built-in 2600mAh battery.
- Support DC5V/2A power supply.

## Indicator Status

**Yellow light:** always bright during charging

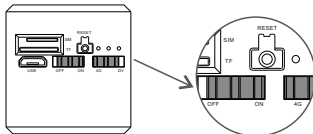
**Blue light:** slow flash---waiting for connection; fast flash---during connection; always bright ---connection success

**Green light:** slow flash---during recording; fast flash---does not insert a TF card

**Restore factory:** the green and blue lights are on, then the blue light flashes slowly

## Step 1: Pre-Setup

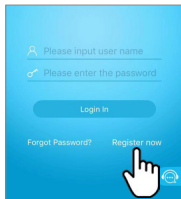
- ✓ Please insert a SIM card that have internet access.
- ✓ Turn the power switch to “On” mode.



- ✓ Turn the mode switch button to “4G” mode.

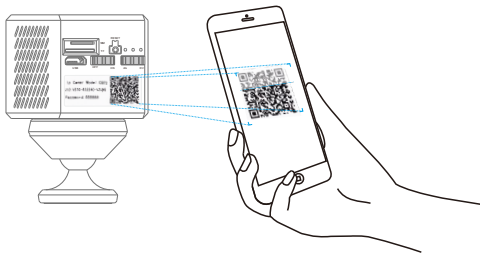
**(Please insert the SIM card before switch it to “on” mode. )**

## Step 2 : APP Download and Registration

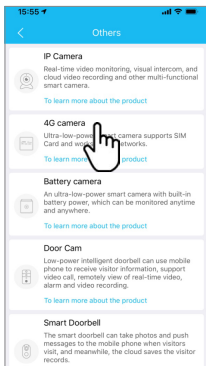


- 1 Search for “Eye4” in App Store or Google Play, or scan the QR code to download the app.
- 2 Click “Register”, enter the user name and password to complete the registration, and also supports the third party such as Facebook to login directly.

## Step 3: Add Devices to the APP

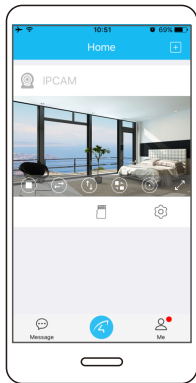


- 1 Open the app, click the “+” in the upper right corner , and scan the QR code on the body of the camera, then follow the prompts on the app to complete the adding. (Note: For Android phone, it will pop up some system permission window, please select “Allow”)



- 2 If you can't find the QR code, click the “+” in the upper right corner, select “Others” on the bottom right corner — “4G Camera”——“Next-Manually add” on the right corner, then follow the prompts on the app to complete the adding.





## You're Done!

Wait for about 30 seconds, it will prompt “binding successfully” on the APP.

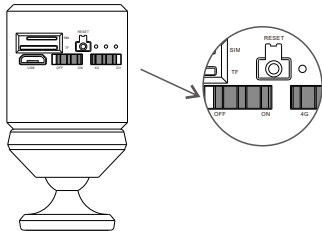
If it failed, please do a hard reset to the camera and reconfigure it.

Please write down your device information:

Eye4 account name: \_\_\_\_\_

Eye4 account password: \_\_\_\_\_

## DV Mode Usage

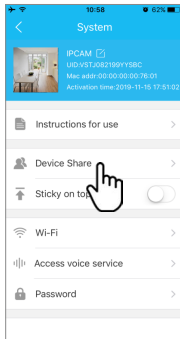


Turn the power switch to “ON”, the mode switch button to “DV”, and insert a TF card for 24 hours of continuous recording.

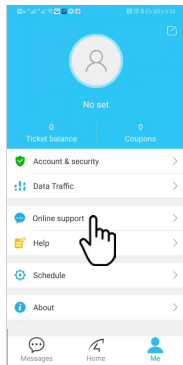
How to view recording videos?

- 1 Turn the mode switch button to 4G mode, enter the APP, and go to “TF card” to view.
- 2 Place the TF card in the card reader and plug the card reader to the computer, then you can view the video on the computer.

## Device Share



Click “Settings” on the right corner, then select “Device Share”--- “QR Code Sharing”. Other users can open the app and click the “+” in the upper right corner of the home page to scan the QR code to add the device.



FAQ